

FLAMEPROOF

EPKZM Series - Circuit breaker enclosure - Copper-free aluminium



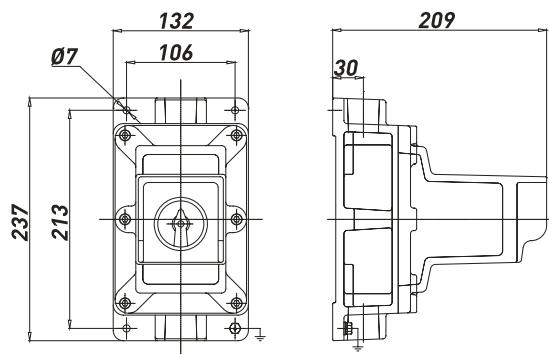
- EPKZM Series enclosures are designed to house motor protector circuit breakers up to 63A.
- Made of copper-free aluminium, EPKZM are suitable for indoor and outdoor plants

TECHNICAL FEATURES

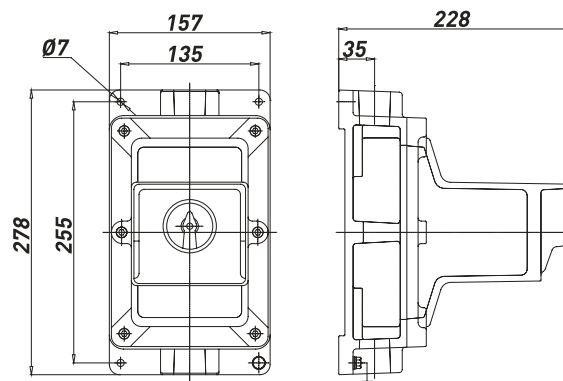
| | |
|-----------------------------------|--|
| Material | Copper-free aluminium |
| IP rating | IP66/IP67 |
| Ambient temperature range | -30°C to +55°C |
| Approvals | ATEX: 02ATEX0027X EAC: RU C-IT.BH02.B.00588/20 |
| Marking | II 2 GD Ex d IIB T6 Gb Ex tb IIIC T85°C Db IP66/67 |
| Surface treatment | Polyurethane painting cycle - Blue RAL5014 (other colour available upon request) |
| Thread | N° 2 entries Metric pitch 1.5, ANSI B1.20.1 NPT |
| Standard certificate label | Made by self adhesive UV and corrosion resistant polyester, approved by certified Laboratory. |
| Optional accessories | Internal anticondensate painting Traffolyte/Stainless steel certificate label Hot deep galvanized steel or Stainless Steel AISI316 stand/canopy. |

Dimensions EPKZM

TAB-A



TAB-B



EPKZM-3

EPKZM-4

EPKZM Series enclosures - Standard versions*

| TYPE | CODE | ENTRIES | WEIGHT [Kg] | DRAWING |
|-----------------------------------|---------------|-----------|-------------|---------|
| EPKZM-3 - GREY/BLACK HANDLE 55X55 | B012104010004 | 2 X M32 | 3.25 | TAB-A |
| EPKZM-3 - SRC BLACK HANDLE | B012104010006 | 2 X M32 | 3.25 | TAB-A |
| EPKZM-4 - YELLOW/RED HANDLE 72X72 | B012104010008 | 2 X M32 | 4.60 | TAB-B |
| EPKZM-4 - SRC BLACK HANDLE | B012104010010 | 2 X M32 | 4.60 | TAB-B |
| EPKZM-3 - GREY/BLACK HANDLE 55X55 | B012104010005 | 2 X 1"NPT | 3.25 | TAB-A |
| EPKZM-3 - SRC BLACK HANDLE | B012104010007 | 2 X 1"NPT | 3.25 | TAB-A |
| EPKZM-4 - YELLOW/RED HANDLE 72X72 | B012104010009 | 2 X 1"NPT | 4.60 | TAB-B |
| EPKZM-4 - SRC BLACK HANDLE | B012104010011 | 2 X 1"NPT | 4.60 | TAB-B |

Above codes refer to empty enclosures. For complete motor protector circuit breakers, ask to our Sales Dept.

*Standard enclosures EPKZM Series are supplied ATEX/TR-CU certified. For IECEx certificate, ask to our Sales Dept.

*Standard enclosures EPKZM Series are supplied painted. Standard painting cycle: C4 - Colour: Blue RAL5014 (Other colours upon request)